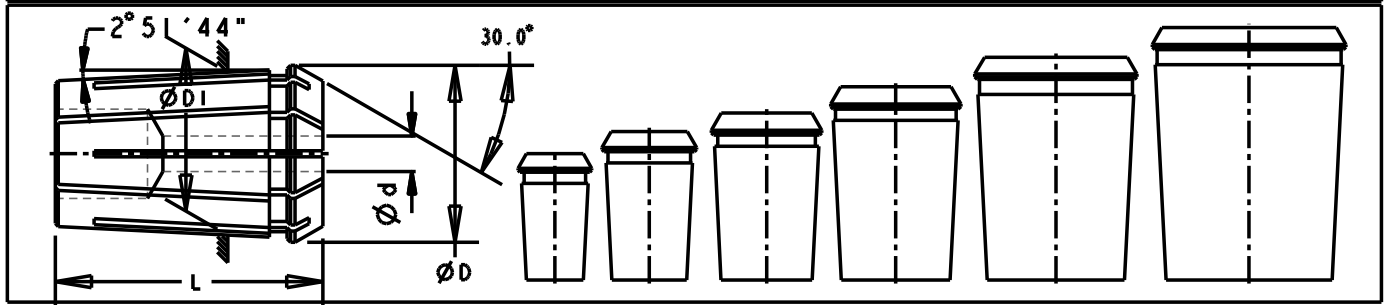


RDO COLLETS-FORM B

DIN 6388-FORM B



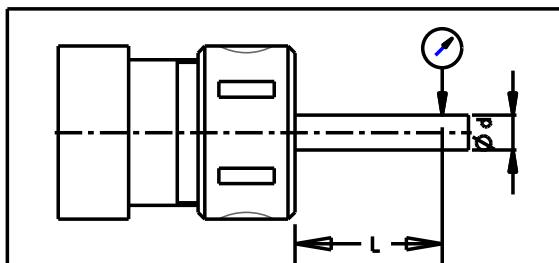
Type of Collet	ØD	ØDI	L	BORE				Collet		
				Ød		In step of		Type	Collapses by	
				mm	Inch	mm	Inch		mm	Inch
				From - To	From - To					
RDO20	19.80	17.75	34.0	1.0-4.5	1/32-3/16	0.50	1/64	C/B	0.50	1/64
				5.0-12	13/64-1/2					
RDO25	25.50	22.65	40.0	2.0-7.5	5/64-19/64	0.50	1/64	C/B	0.50	1/64
				8.0-16.0	5/16-41/64					
RDO30	29.80	27.40	45.0	2.0-8.5	5/64-11/32	0.50	1/64	C/B	0.50	1/64
				9.0-20.0	23/64-51/64					
RDO35	35.05	32.90	52.0	2.0-9.5	5/64-3/8	0.50	1/64	C/B	0.50	1/64
				10.0-26.0	25/64-1					
RDO44	43.70	41.30	60.0	4.0-11.5	5/32-29/64	0.50	1/64	C/B	0.50	1/64
				12.0-32.0	15/32-1 1/4					
RDO52	52.20	49.70	68.0	12.0-30.5	1/2-1 11/64	0.50	1/64	C/B	0.50	1/64
				31.0-40.0	1 3/16-1 37/64					

Also available are:

\* C/B = Counterbore, T/B = Throughbore

1. Sealed collets for coolant through application (For details refer page no. 9)
2. Any other bore size on request at extra cost
3. High precision/Ultra precision collet on request at extra cost

RUNOUT DETAILS:



Dia-d mm	Length-L mm (Min.)	# Tolerance mm-TIR (Max.)		
		Precision(-)	High Precision(HP)	Ultra Precision(UP)
1.0-1.6	6.0	0.015	0.010	0.005
>1.6-3.0	10.0	0.015	0.010	0.005
>3.0-6.0	16.0	0.015	0.010	0.005
>6.0-10.0	25.0	0.015	0.010	0.005
>10.0-18.0	40.0	0.020	0.015	0.005
>18.0-24.0	50.0	0.020	0.015	0.005
>24.0-30.0	60.0	0.020	0.015	0.005
>30.0-50.0	80.0	0.030	0.020	0.005

Ordering Instruction: RDO35-1/4"-HP

Collet type    Bore size    # Tolerance range